



INTERMARINE ELECTRONICS S.A.



NEW NAVIGATOR G2 ECDIS

SMART USER FRIENDLY ECDIS WITH RADAR OVERLAY

COTROLLED AT YOUR FINGERTIPS TO GET THE JOB DONE



The implementation of new IMO standardization principles in our G2 ECDIS enables users to locate and understand important information quickly and enhance all levels of situation awareness



ALL-IN-ONE NEW ECDIS *Navigator G2*

Our new ECDIS NAVIGATOR G2 products are powered by the well-proved G2 chart handling software, which is now used onboard by thousands of navigation officers. The new Navigator G2 ECDIS is being upgraded to the new IMO standardization among other things, and has been wheel mark approved, in accordance with the most recent rules and regulations.

It is built on the latest Intel i7 (4,7Ghz) 11th generation CPU with 3D Iris® Xe Graphics GPU required by the future standard S-100. It has a High Definition 1920x1200 multi-touch screen protected by tempered anti-reflective glass with One Key Recovery. It is among the best and most powerful ECDIS on the market today, with a long lifespan and a reasonable price.



Efficient Solutions for Chart Maintenance and Serviceability

The Navigator series G2 ECDIS platform runs all commercial Electronic Navigational Charts (ENCs),. It also incorporates additional overlay functions, such as Admiralty Information Overlay (AIO), NAVTEX, Radar & AIS target, weather ARCS etc.

Updating charts is as easy as a clicking a button. When the optional NAVBOX is used or any other device that comply with IEC 61162-460, then updates are done automatically where in addition to the chart database, all permits, AIO data, and subscribed digital publications are also updated at the same time without crew involving.

Supported Standards

IMO ECDIS Performance Standard, EU directive 2023/1667
 IEC 61174 ed.4.0, IEC 62288 ed.3.0, IEC 61162-1 ed.5.0, IEC 61162-2 Ed.1.0, IEC 61162-450:2018, IEC 61162-450 Ed.2, IEC 62923-1:2018, IEC 629232:2018, IHO S-57 Ed.3.1, IHO S-52 Ed.6.1, IHO S-52 Pres Lib Ed.4.0.2, IHO S-63 Ed.3.1, IHO S-64 Ed.3.0, AML Portrayal specification version 3.0.0 Admiralty AIO v.3.

The **NAVIGATOR** series G2-ECDIS family designed to meet your current demands and future needs.

Has been built with the end user in mind and developed to ensure enhanced efficiency though simplicity. The use of IMO standardization reduce head down time, increase situation awareness, and provide users with more time to look out, evaluate situations and monitor a ship's safe navigation.

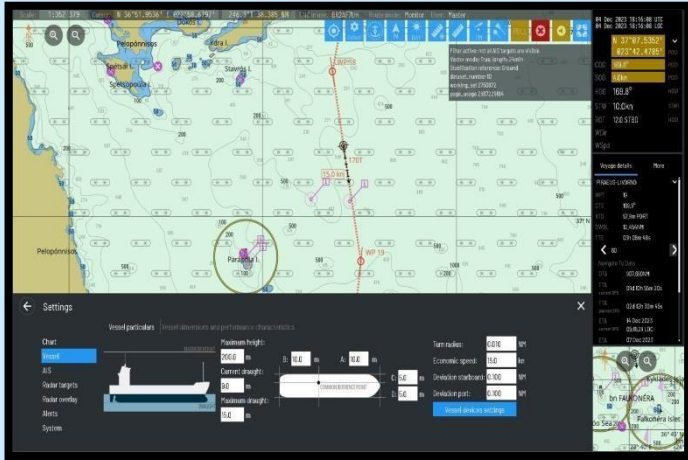
With optional NAVBOX interface you can enjoy all NAVTOR services for an efficient user experience.

Our **Navigator G2**-ECDIS range is built on the most recent technology and has a unique design to guarantee utmost dependability and the best MTBF. We provide a minimum 10-year service life for our ECDIS. Since our products are developed in-house, we have control over all the components.



Better Situational Awareness

The goal of the new hardware and chart handling software is to give you the greatest performance possible. A quick access bar for essential functions, editable look ahead zones for anti-collision, anti-grounding and route monitoring, the navigators receive a validated picture of the current situation allowing good decision making and decrease workload.



OpenGL Graphics Rendering

The **Navigator G2 ECDIS** can handle up to 10.000 AIS targets by rendering them with OpenGL over thousands of GPU cores, which is 50-100 times faster than CPU rendering.

Training and Support

Our training solutions are easy to use, intuitive, and user-friendly and are in accordance with IMO requirements for type-specific ECDIS familiarization training. The intuitive nature and simple interface will enable your staff to be certified into safe operation of our ECDIS within a very short time.

Classroom training, Computer Based Training (CBT)- On-board / on-site training

Simplified installation

Installing and setting up the ECDIS is a fast, reliable, and simple process. It is "Plug & Play" system, with installation time of about 2-3 hours with prepared sensor cables.

Service & Support Concept

Swap maintenance concept and unlimited e-service and through our Global Service network.

Main Functionality

- Import S-57/S-63 ENC charts & updates
- NAVTOR SENC chart import -
- S-52 and INT1 chart presentation
- Chart database handling and display
- OpenGL GPU chart rendering
- Coordinate systems & geodetic calculation
- Route planning and monitoring
- Own ship - Anti-grounding
- Safety check
- User chart layer and mariner objects
- AIS & Radar targets, NAVTEX,
- Radar overlay
- Admiralty AIO,
- UKHO ADP,
- NAVTOR NAVBOX access
- IMO Standardized
- Weather chart layer, MARPOL, NavArea
- NMEA 0183/IEC 61162-1 parser
- Communication lines (TCP/IP, UDP, Serial)
- IEC 61162-450 Ed.2

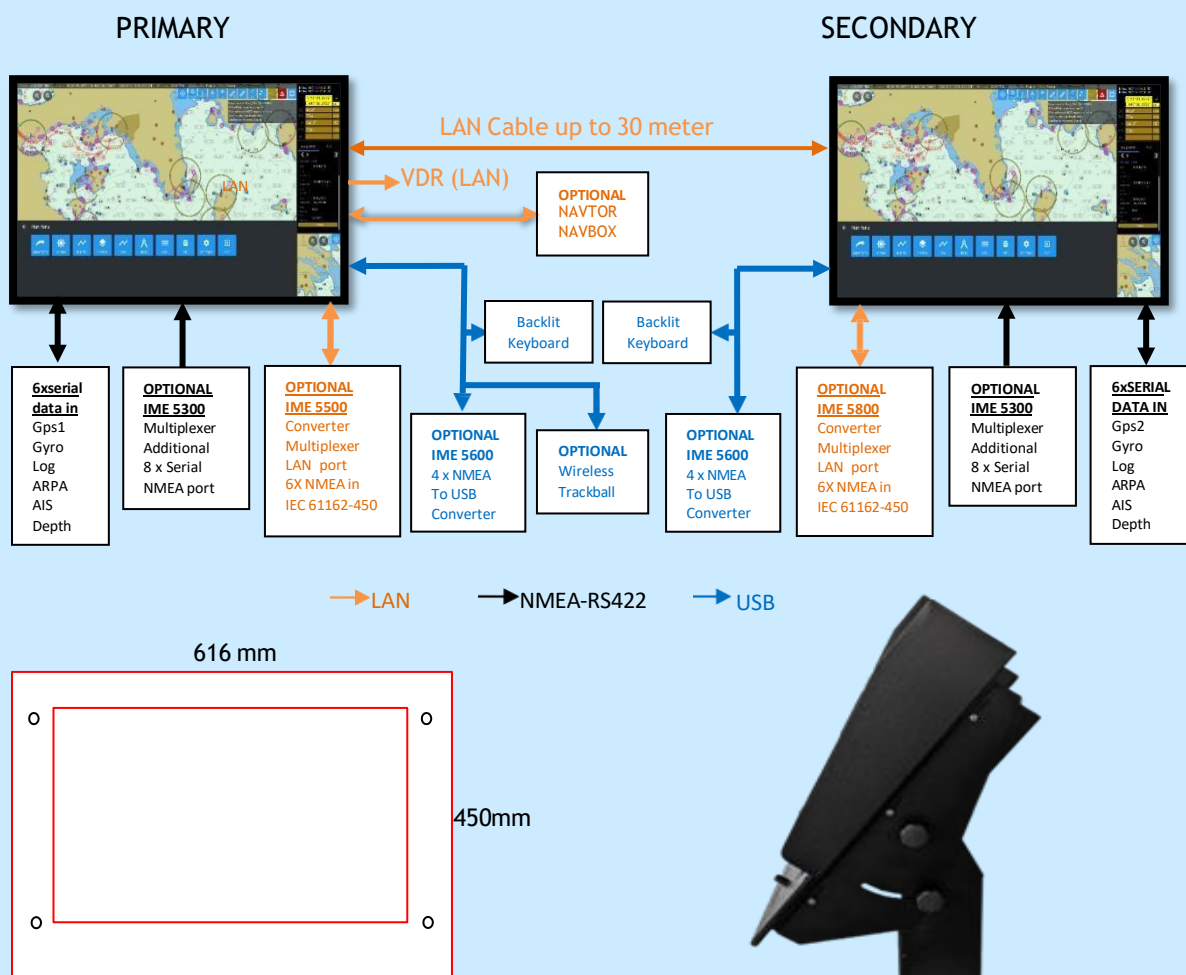


There are four optional additional interface converters to choose from. **IME-5300** is a multiplexer 8 x NMEA. **IME-5500** is a multiplexer - multiplier 6 x NMEA to LAN in accordance to IEC 61162- 450 . **IME-5600** is 4 x NMEA to USB converter. **IME-5700** is a managed Ethernet switch. Almost of them are protected against lightning.



Navigator G2 ECDIS specifications

- High definition 24" TFT screen 1920x1200 with Anti-reflective tempered glass
- Capacitive multi-touch screen 10 points activated with figure, glove & pen
- CPU Intel i7, 11th generation 4 cores 8 threads with turbo speed of 4,7Ghz with Intel IRIS graphic
- RAM 8GB DDR4 onboard - Expandable up to 64GB
- 6 x 232/RS422/NMEA with galvanic isolation fitted inside
- 1 x SATA SSD/HDD 2.5" max 3TB, fitted on a removable hot swap tray.
- 1 x M.2 support (PCIe) with high speed NVME protocol or SATA
- 1 x Mini PCIE
- 1 x VGA output resolution 1920 x1200
- 1 x DP port with resolution 4096 /3840 x 2160
- 2 x 3.1 USB. Gen.2 port with maximum Tx 10 Gbps,
- 2 x USB 3.1 standard, 4 x 2.0 USB
- 3 x LAN Gigabit network Support Network wake-up and PXE
- 1 x audio line output port,
- 1x mic in port, 2 x stereo speakers fitted inside
- 1 x 5 VDC 25W power supply for external DVD & USB hub
- 1 x 12 VDC 1A Fused output to supply an additional external NMEA converter
- Input 90–265 VAC, 50-60 Hz 85W. Power supply of 350W is fitted inside
- Aluminum chassis
- 1 X IME Backlit keyboard & 1x mouse
- Dimensions 616mm (H) x 415mm(V)
- Weight 12,6Kg
- Working temperature -20 to 60c
- OS windows 10 Pro 64 bit
- One Key Recovery to restore ECDIS in case of crash
- OPTIONAL*
- Input DC 9-36V
- External 6 x NMEA to LAN converter IEC 61162-450
- External 8 x NMEA multiplexer converter
- External 4 x NMEA to USB converter
- Wireless track ball
- Heavy duty pedestal providing 0-60 tilt
- Heavy duty aluminum console
- Sunshade protection aluminum cover



Specification may changed without notice



INTERMARINE ELECTRONICS S.A.

16, AGION SARANTA Str., PIRAEUS 18346, GREECE • TEL: +30 210 48.13.200

www.ecdisnavigator.com – www.intermarine.gr - sales@intermarine.gr